

E8267D-15

S E R V I C E N O T E

Supersedes:
None

E8267D PSG Vector Signal Generator

Serial Numbers: [0000A00000 / 9999Z99999]

Instruments with option HCC failing self-test 704

To Be Performed By: Agilent-Qualified Personnel or Customer

Parts Required: None

ADMINISTRATIVE INFORMATION

SERVICE NOTE CLASSIFICATION:		
MODIFICATION AVAILABLE		
ACTION CATEGORY:	AGREEABLE TIME	x PERFORMANCE ENHANCEMENT <input type="checkbox"/> SERVICE / RELIABILITY ENHANCEMENT
LOCATION CATEGORY:	x CUSTOMER INSTALLABLE <input type="checkbox"/> ON-SITE x SERVICE CENTER	AVAILABILITY: EOS
AUTHOR: DMc PRODUCT LINE: PL15		
ADDITIONAL INFORMATION:		

© AGILENT TECHNOLOGIES, INC. 2007
PRINTED IN U.S.A.



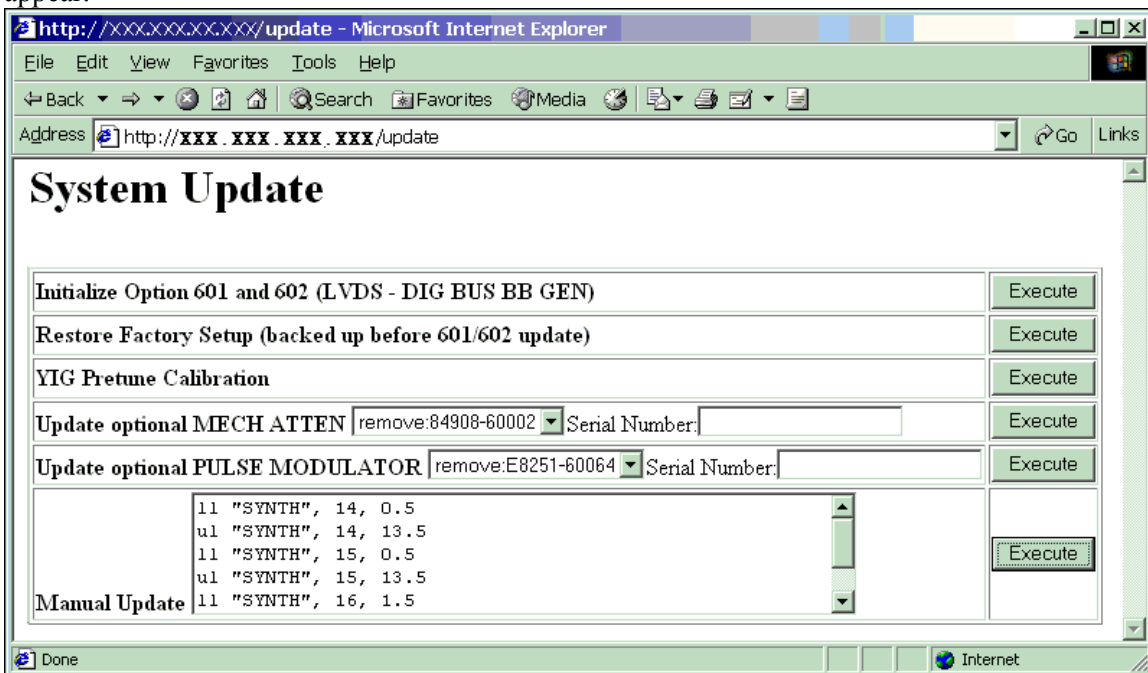
August 30, 2007

Situation:

Instruments with HCC need 704 self-test limits modified. The replacement A6 FracN board part number is shipped with one of self-test test limits designed for the standard instrument. But because of a change in cable lengths instruments with option HCC can cause good assemblies to fail self-test 704. So after replacing the A6 FracN in instruments with option HCC, the limits need to be modified.

Solution/Action:

1. For instruments with option HCC, when the A6 FracN board is replaced or if you are experiencing self-test failure 704, verify the self-test limits by pressing : Utility, Instrument Information/Help Mode, Self Test, and View Test Info.
2. Using the RPG or up and down arrow keys and scroll to self-test 704. Press: Run Highlighted Test.
3. When self-test is complete press: View Details. The lower and upper limits for the following tests should be:
 - a. 1-1.55 GHz lower = 0.5 upper = 13.5
 - b. 1.55-2.4 GHz; lower = 0.5; upper 13.5
4. If the self-test limits are correct continue to troubleshoot the problem using the troubleshooting procedure.
5. If the self-test limits are not correct, verify the instrument had firmware is C.04.71 or later and if not update to the latest version of firmware.
6. Connect the instrument to the LAN, cycle power and press: Utility, GPIB/RS-232 LAN, and LAN Setup and record the IP address.
7. Open a browser window and type in the instrument IP address/update (<http://xxx.xxx.xxx.xxx/update>) and the following screen should appear.



8. Enter the following text into the 'Manual Update' form as shown:

```
ll "SYNTH", 14, 0.5
ul "SYNTH", 14, 13.5
ll "SYNTH", 15, 0.5
ul "SYNTH", 15, 13.5
ll "SYNTH", 16, 1.5
ul "SYNTH", 16, 13.5
ky 53004
```

9. Press the Execute button next to the Manual Update form.

10. When the update is complete another webpage will be displayed with the message 'Operation completed'. To finish, cycle the power on the instrument and verify the limits have been updated using steps 1-3.

Note: If you need to revert to the standard self test limits, repeat step 7 and enter the following information:

```
ll "SYNTH", 14, 1.5
ul "SYNTH", 14, 13.5
ll "SYNTH", 15, 3.0
ul "SYNTH", 15, 13.5
ll "SYNTH", 16, 2.0
ul "SYNTH", 16, 13.5
ky 51873
```